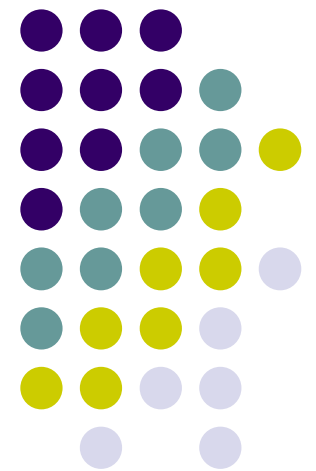


# Gene Haynes Addition

---

North High Engineering





# Engineering / PLTW

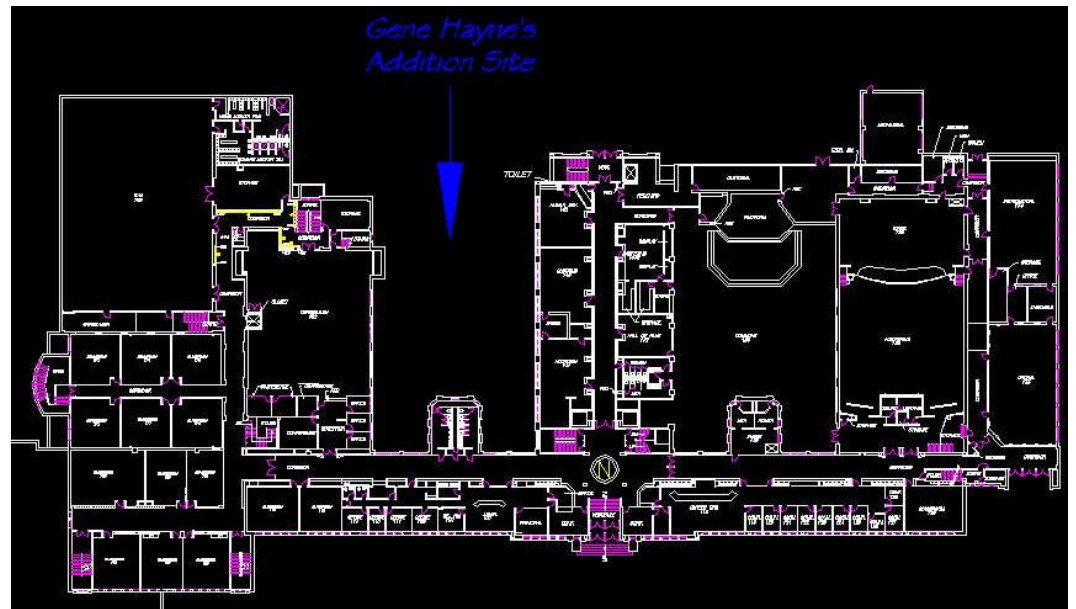
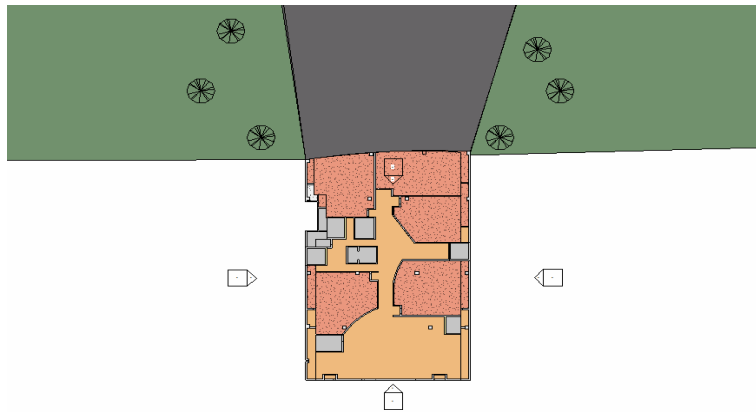
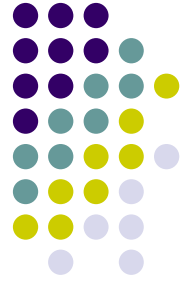
Why this addition is needed

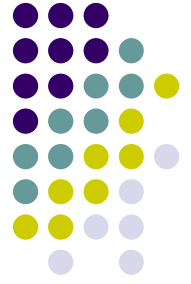
- The continuous growth of the Engineering Dept.
- Over population of Engineering Classes
- The ability to meet the ever evolving needs of the engineering students





# Site

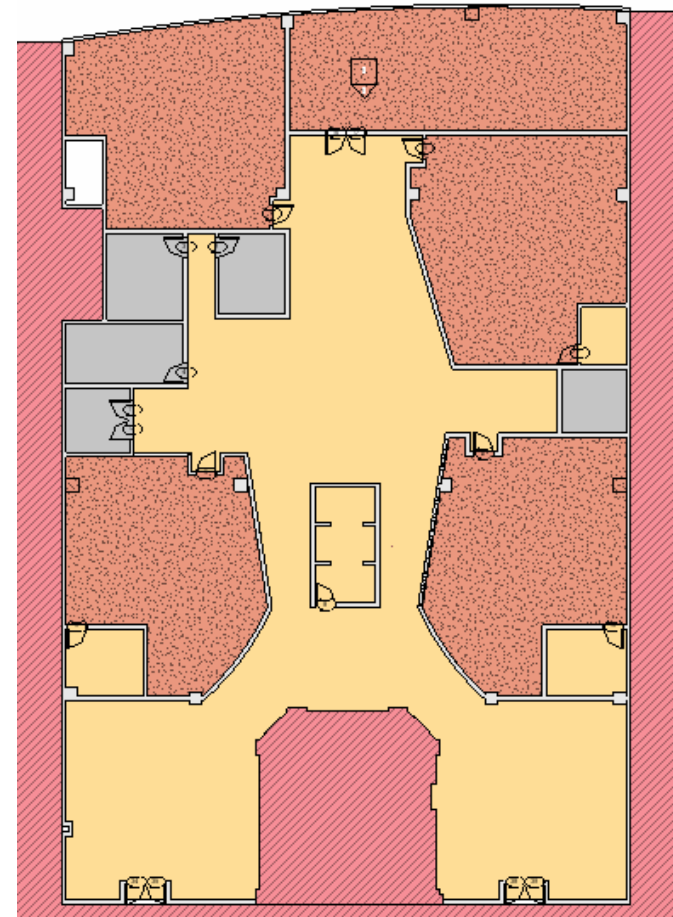
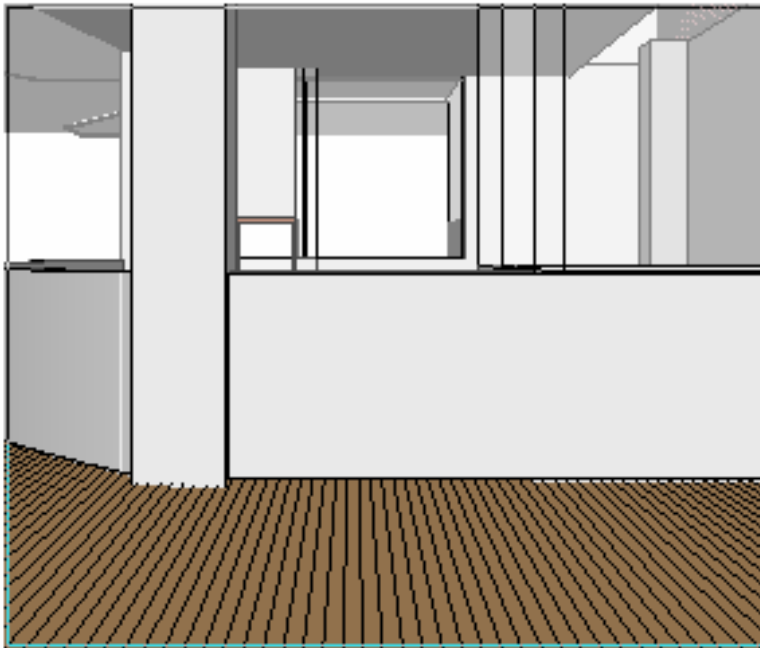
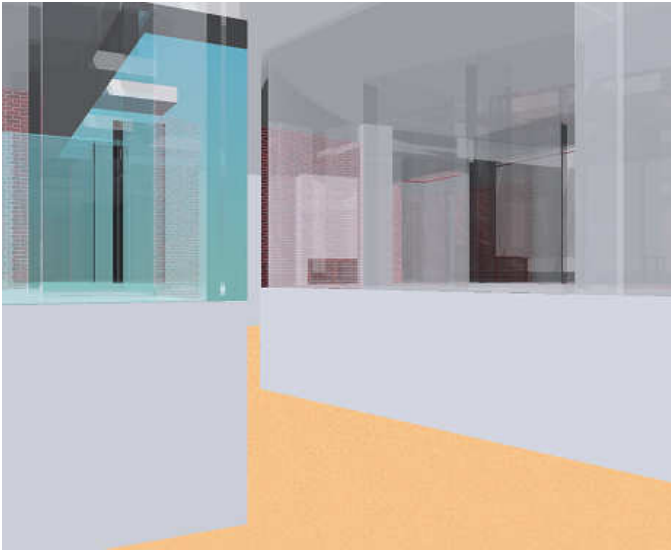


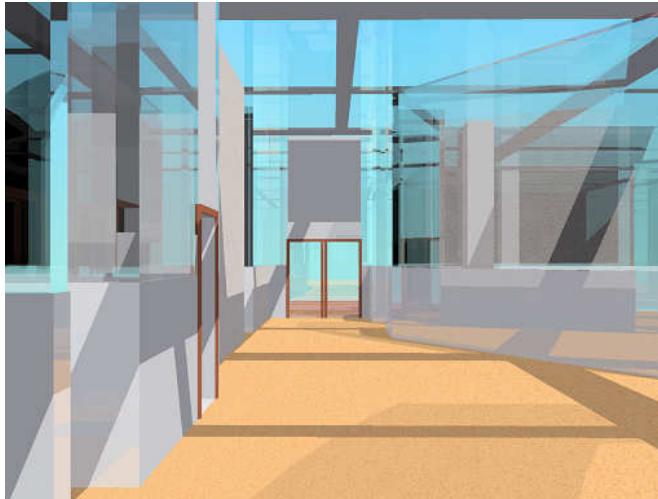


# The New Addition

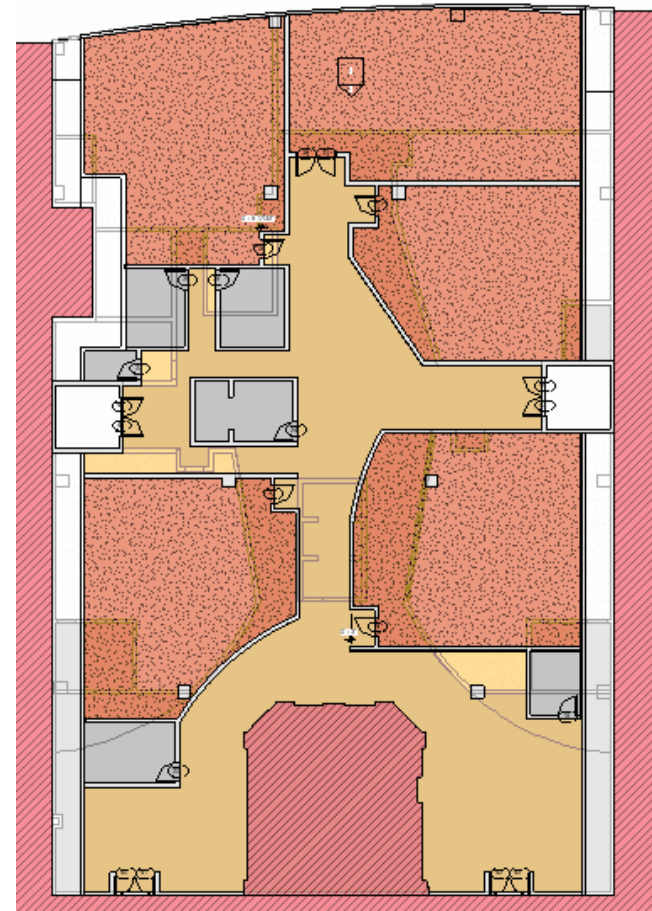
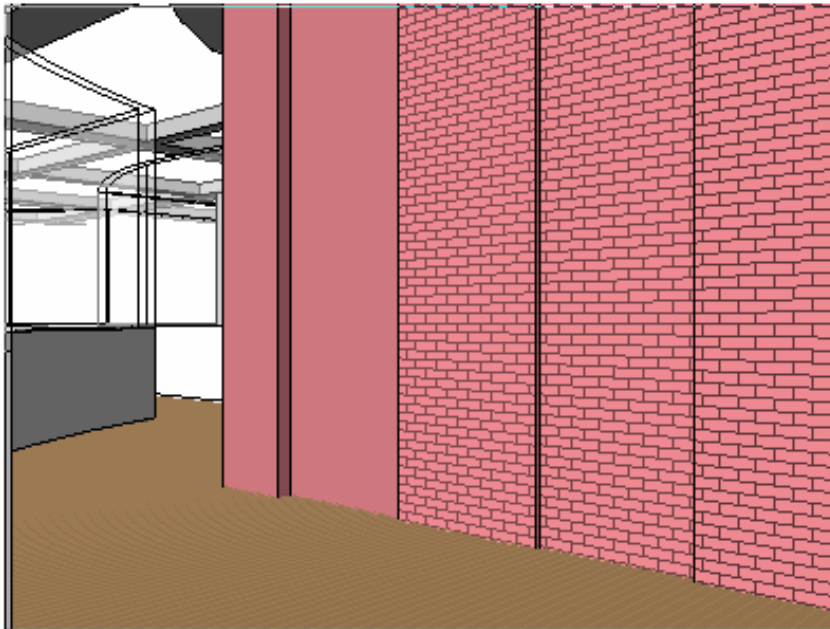
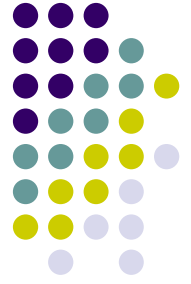
- Two floors above the existing parking area
- Approximately 6500 sq ft/level
- Four classrooms per level
  - Office space
  - Conference room
- Main floor – Engineering
- Second floor – Bio-Technology (Science and Engineering)

# Engineering Wing



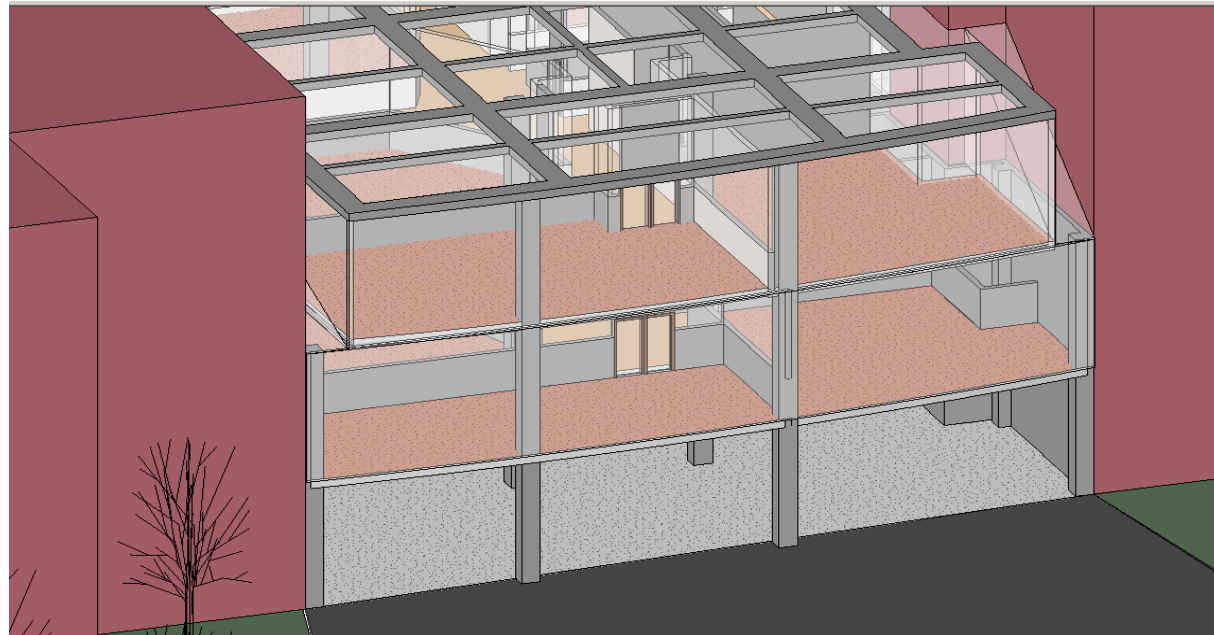
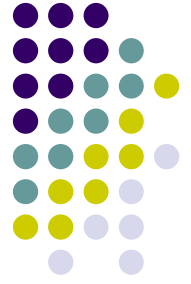


# Science Wing





# West Wall



# North High Engineering CEA

